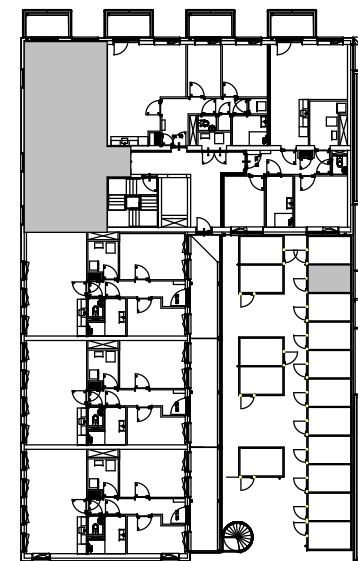
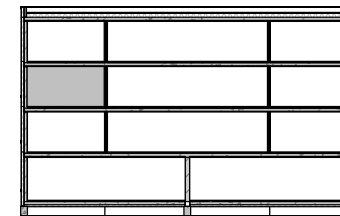
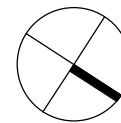


RENOVOOI

| | | | |
|-------|--------------------------|----|----------------------------|
| wtw | wtw (warmteterugwinning) | vw | vaatwasser |
| wp | warmtepomp | kk | koelkast |
| wm | wasmachine | vv | vloerverwarming |
| wd | wasdroger | kt | kooktoestel |
| • tel | telefoon aansluitpunt | | elektrische radiator |
| • caï | caï aansluitpunt | | vrij te houden vluchtroute |



2e verdieping

plattegrond type E 2



| | |
|---------------|----------------------------|
| Complex nr : | Holenkwartier 15A |
| Tekening nr : | 1-1.6 |
| Adres : | Johan Ridderikhoffstraat 9 |
| Woningtype : | Type E 2 |
| Schaal : | 1 : 100 |
| Formaat : | A4 |